

# Hollywood Transit Center



# **The Hollywood Hub**

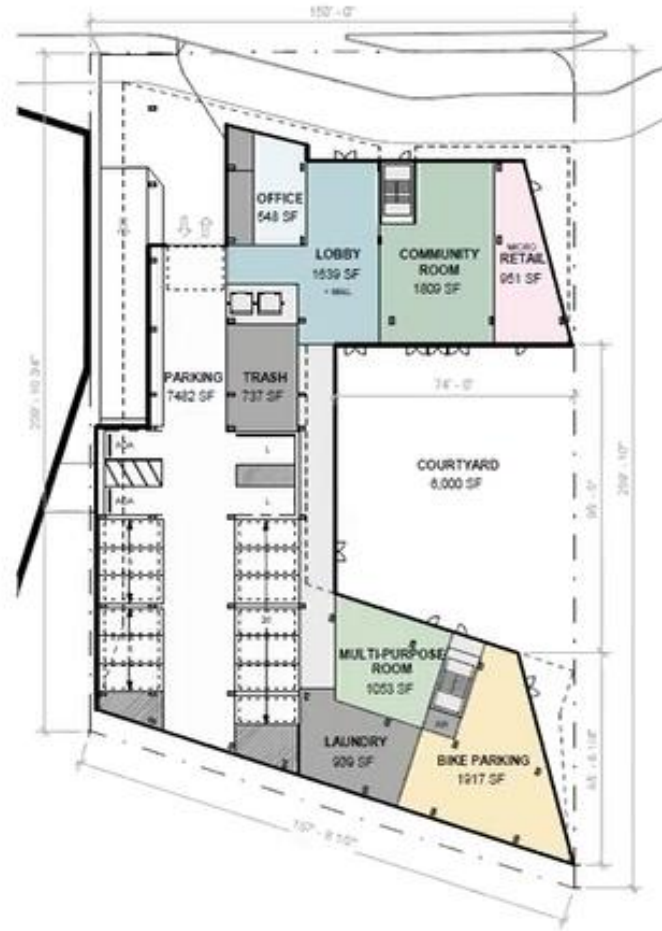
(Is this a Transit Oriented Development ?)



LEVEL B1 BASEMENT FLOOR PLAN

**BUILDING SUMMARY**

HEIGHT	120 FT
LEVELS	12
CONSTRUCTION TYPE	TYPE-I
UNIT COUNT	234
FLOOR	GSF
BASEMENT	3,593
01	11,931*
02-12	20,474
TOTAL	240,071



LEVEL 1 FLOOR PLAN



LEVEL 2 FLOOR PLAN



LEVEL 3-12 FLOOR PLAN

N

# Bridge Housing's "Hollywood Hub" Proposal



24-hour Fitness

NE Halsey Street

Existing Hollywood Transit Center



Bike/Ped.  
Bridge

MAX  
Platform

I-84

N.E. 42nd Ave

Existing  
Bus Stops

Housing  
Development  
Site

N.E. Halsey St.

**Existing Hollywood Transit Center**



Stop Lines for Bus Activated Hawk Signal

NE 42nd Ave

NE HALSEY ST

NB #75 & EB #77

Covered Bus Platform

SB #75 & WB #77

North

PARKING ENTRY

OFFICE

LOBBY

COMMUNITY ROOM

RETAIL

PASEO

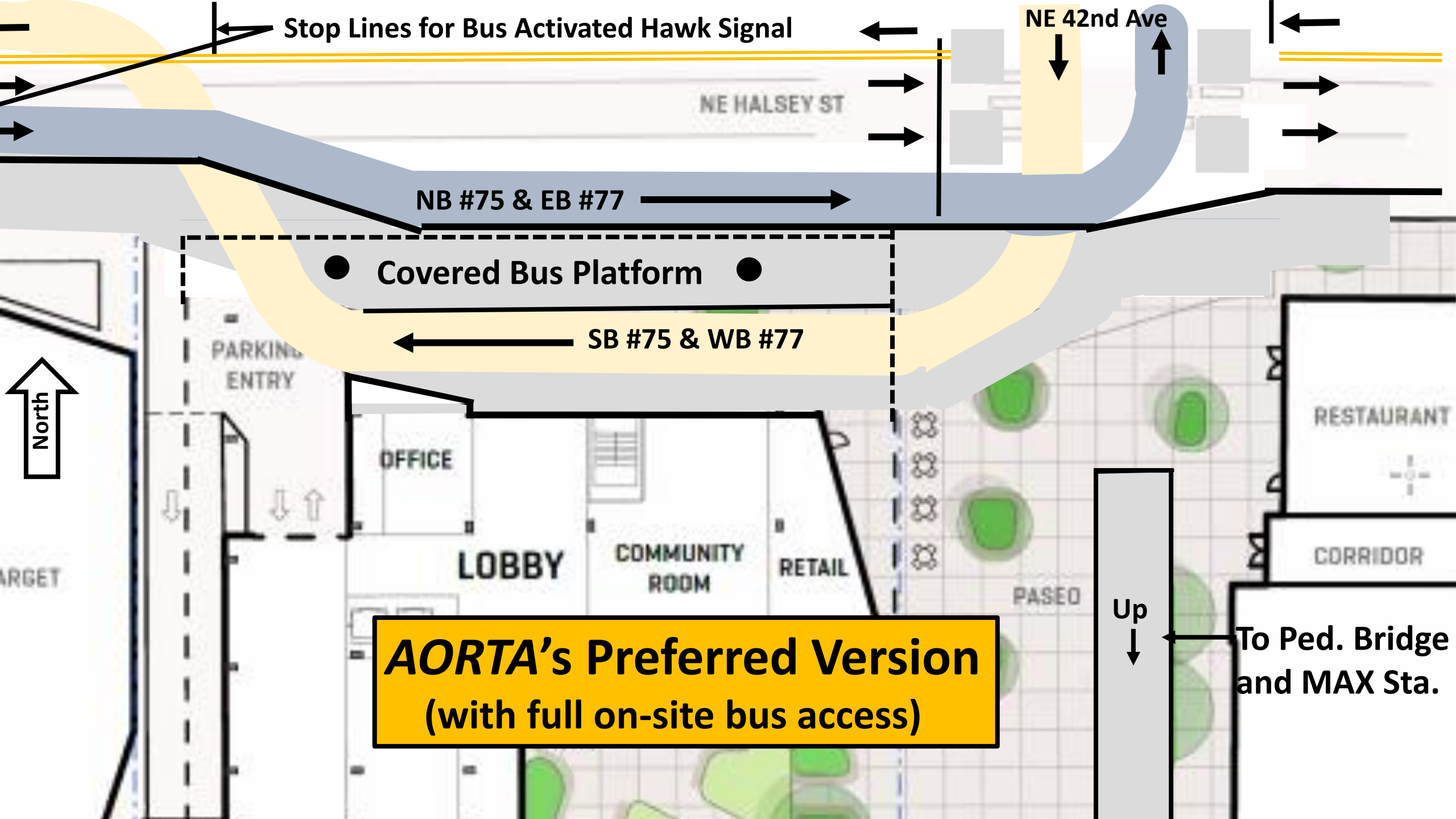
RESTAURANT

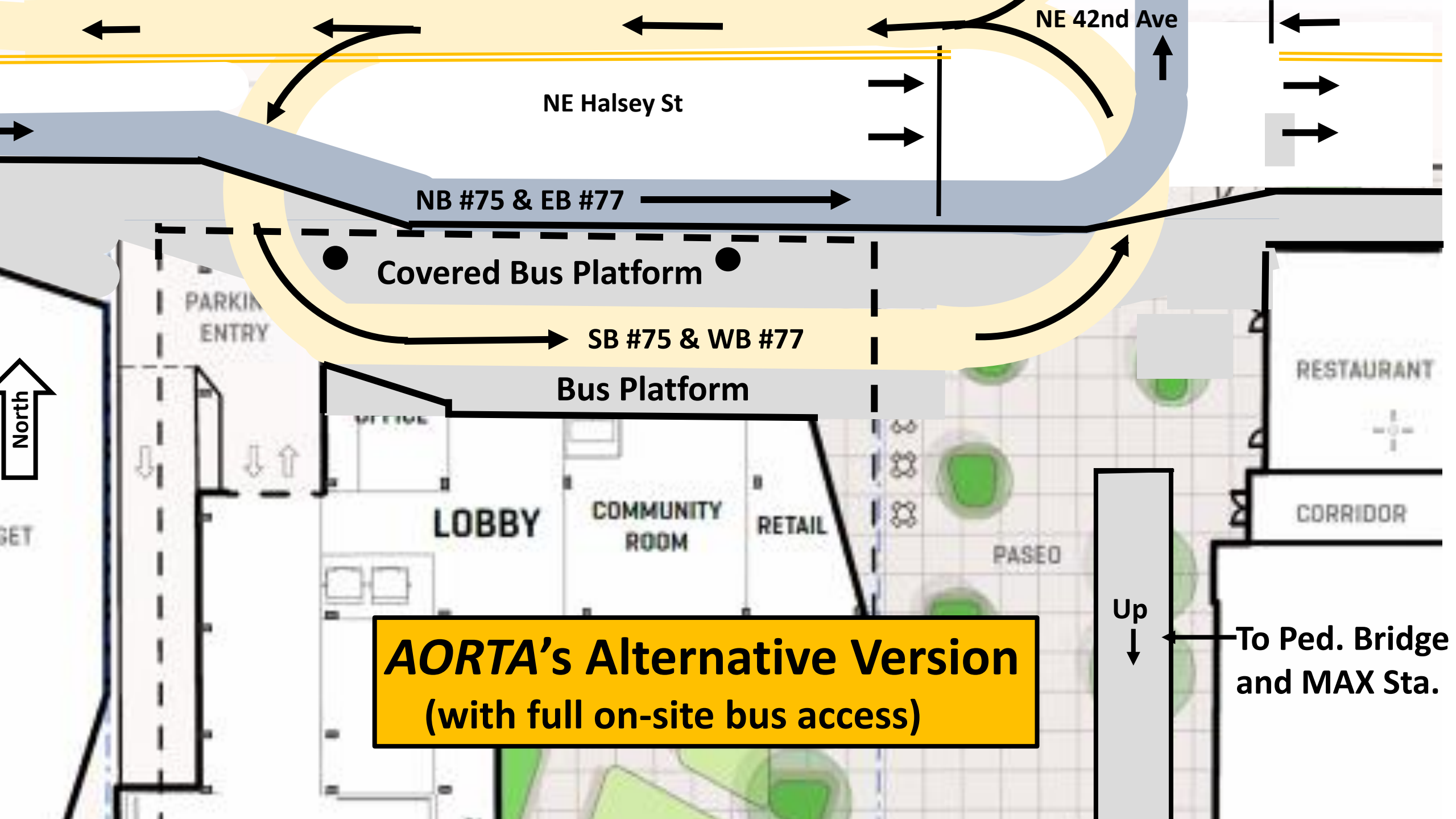
CORRIDOR

**AORTA's Preferred Version**  
(with full on-site bus access)

Up  
↓

To Ped. Bridge and MAX Sta.





NE 42nd Ave

NE Halsey St

NB #75 & EB #77

Covered Bus Platform

SB #75 & WB #77

Bus Platform

PARKING ENTRY

RESTAURANT

LOBBY

COMMUNITY ROOM

RETAIL

PASEO

CORRIDOR

**AORTA's Alternative Version  
(with full on-site bus access)**

Up  
↓

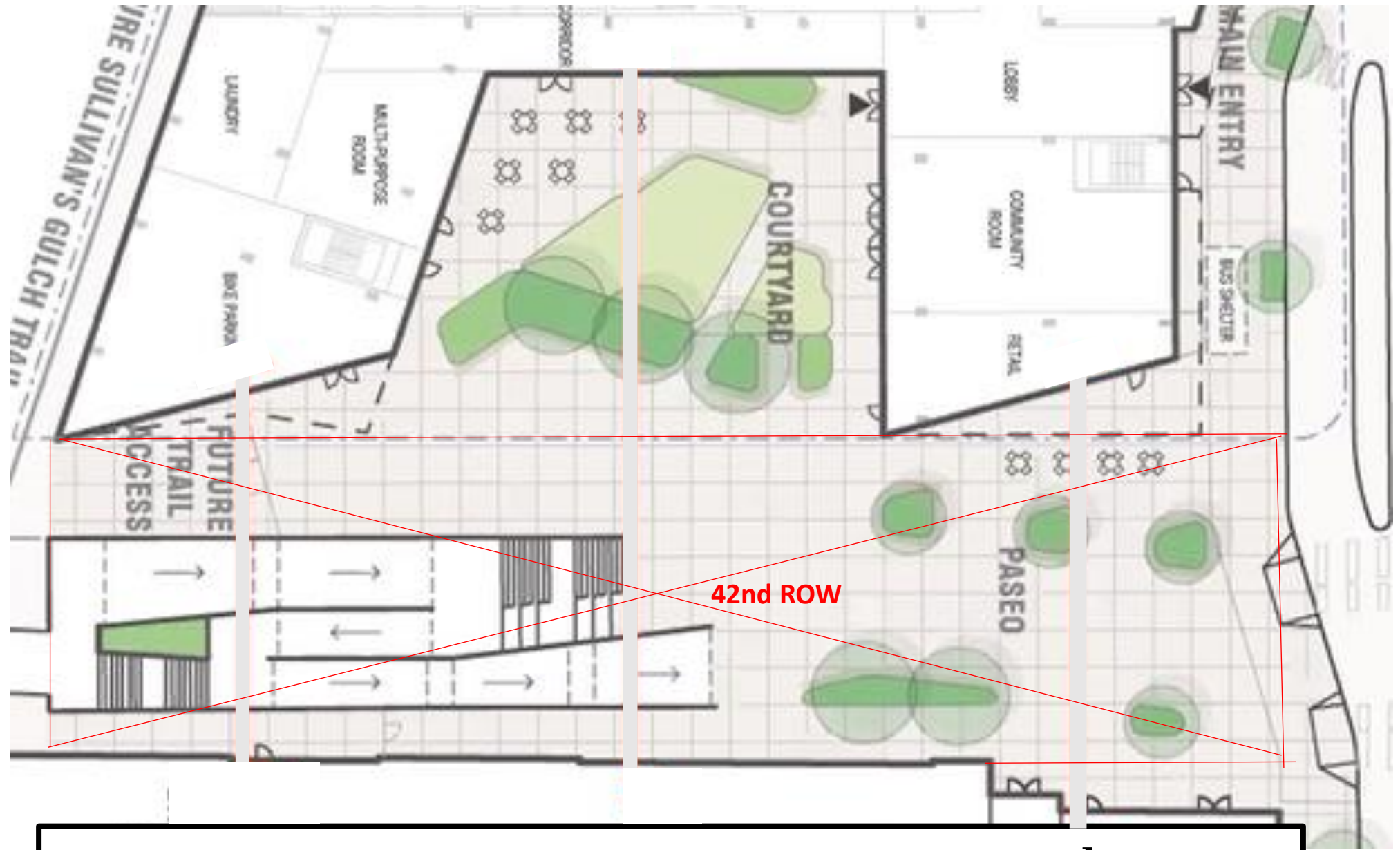
To Ped. Bridge  
and MAX Sta.

North



# Average Daily Ons and Offs at the Hollywood Transit Center (Fall 2018)

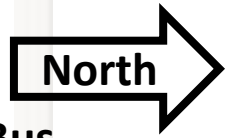
<u>Route</u>	<u>Stop#</u>	<u>Direction</u>	<u>Ons</u>	<u>Offs</u>	<u>Total</u>	<u>Lifts</u>
MAX Blue Line	8344	E	355	579	934	
	8373	W	556	422	978	
MAX Red Line	8344	E	271	485	756	
	8373	W	385	219	604	
MAX Green Line	8344	E	451	387	838	
	8373	W	381	527	908	
#75-Cesar Chavez/Lombard	10868	S	355	356	711	82
	10872	N	380	359	739	84
#77-Broadway/Halsey	10870	E	95	117	212	41
	10869	W	112	85	197	39
#66-Marquam Hill/Hollywood	10871	W	45	0	45	1
	10871	E	0	40	40	0
<b>Totals</b>			<b>3386</b>	<b>3576</b>	<b>6962</b>	<b>247</b>



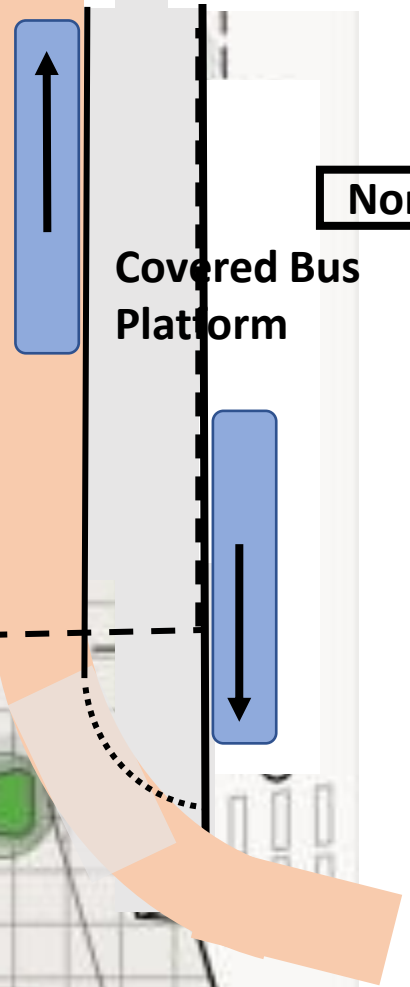
**TriMet's Ramp Proposal for NE 42<sup>nd</sup> ROW**

URE SULLIVAN'S GULCH TRAIL

**234 Housing Units**



Covered Bus Platform



Fence & Gate

Pedestrian Bridge to Second Floor

**Public Plaza**

Security Gate

Stairs



Portland Loo

64'

To MAX

8'

16'

**Walk & Roll Ramp (ADA compliant)**

10'

Private Access

Gate

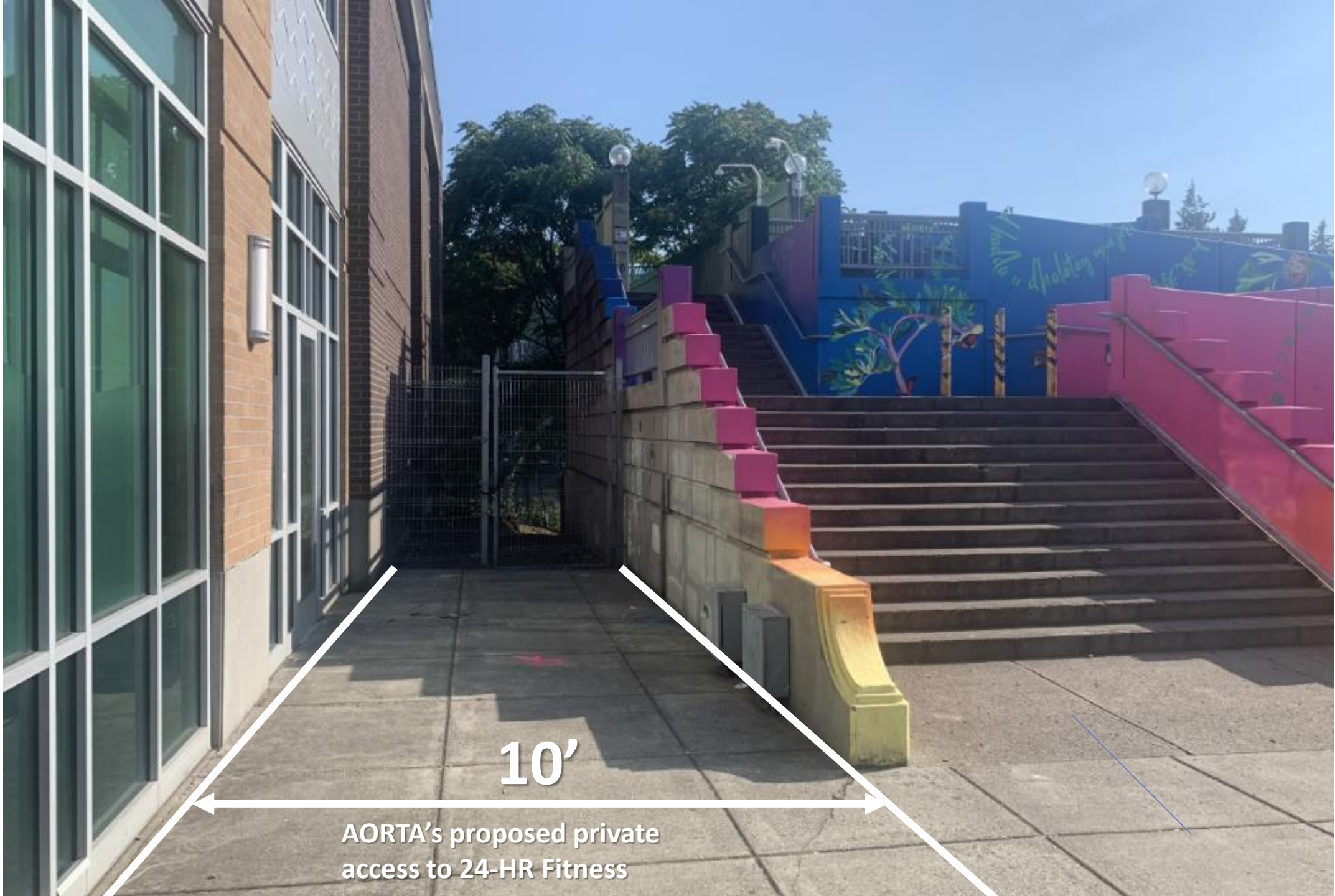
24'x24' substation below

**24-Hour Fitness**

**AORTA's Ramp Proposal for NE 42nd ROW**



**Straight Ramp Location**



10'

AORTA's proposed private access to 24-HR Fitness

# ***AORTA's* Issues with current Hollywood Hub Project**

- **Eliminates full bus access to the Hollywood Transit Center**
- **Requires transferring passengers between MAX and buses to cross Halsey St.**
- **Requires residents of the housing tower to cross Halsey St. for bus service**
- **Does not provide bridge level access between the housing tower and MAX**
- **Ramp switchbacks create unnecessary hazards for bikes, especially for cargo bikes**
- **Does not provide a pedestrian friendly no-stair connection between the #75 and #77 bus stops and the MAX station elevator**
- **Does not propose providing a public toilet facility in the Public Plaza**